

Nortembio® POOL

pH Balance and Control

NATURAL MAINTENANCE FOR SWIMMING POOLS
AND SPAS THAT STAY CRYSTAL-CLEAR



100% Natural



100% Secure



100% Organic



No chemicals

Is your swimming pool showing warning signs?

1 The visual impact (Lost clarity)

Cloudy/milky water:

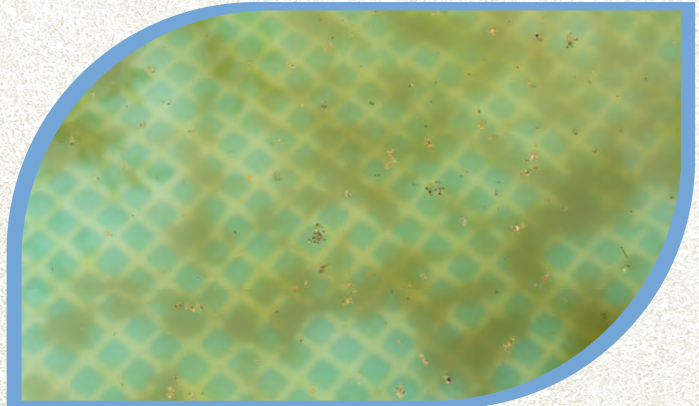
Loss of transparency.

Accumulated sediment:

Stubborn dirt on walls and floors.

Metallic sheen:

Unusual symptoms caused by decalcification or excessive acidity.



2 The impact on well-being (Health at stake)

Eye irritation:

Stinging and redness after a bath.

Skin sensitivity:

Itching, tightness and dryness of the skin when getting out of the water.



3 Damage to your premises (Investment at risk)

Rampant corrosion:

Direct attack on metal staircases, light fittings and heating systems.

Technical obstruction:

Limescale deposits that block filters and nozzles, forcing the pump to work harder.



Why is pH the key?

Definition

pH is a measure of the acidity or alkalinity of water.

Ideal Range

Always keep it between 7.2 and 7.6.

Benefits

It protects your health (skin and eyes), maximises the effectiveness of other products (flocclulants) and extends the lifespan of your pool.



Compatibility and tips

Compatibility: Works well with chlorine, anti-algae agents and flocculants. Safe for spa equipment and heaters.

What you should do: Test weekly, adjust the pH before applying the flocculant, and store in a cool, dry place.

What to avoid: Do not pour the product in undiluted; do not make drastic adjustments (proceed with caution); never apply when bathers are present.

Regulators and Formats

pH Reducer

10 L, 5 L, 1 L.

*Specially designed
for swimming pools and spas.*



pH+ Increaser

1.4 kg, 3 kg, 5 kg, 6.5 kg.

*Specially designed
for swimming pools and spas.*

Implementation protocol

1

Dosage: Calculate the dose based on the volume and the required adjustment.

2

Preparation and Pouring: Dissolve the product in a bucket of water (especially the powder). Pour directly onto the jet streams whilst the filter is running. Important: There must be no swimmers in the water.

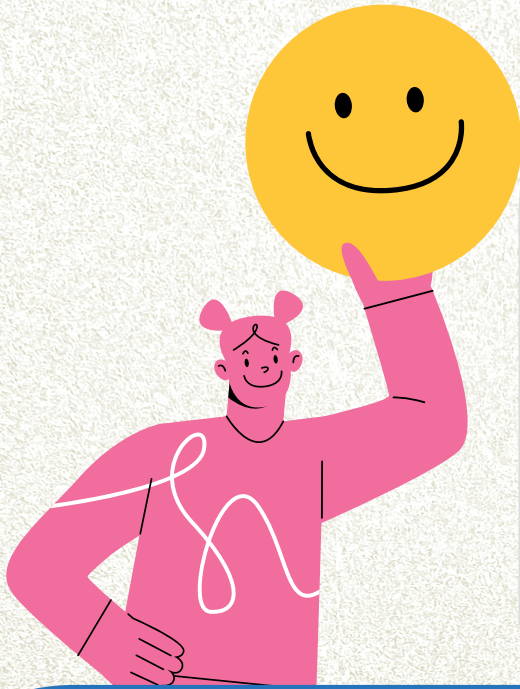
3

Traffic and Control: Let the water circulate for 30 minutes. After this time, measure the pH again and repeat the process if necessary until the ideal level is reached.



Dosage guide

Product	Environment	Reference dose	Effect
pH- (Reducer)	SPA	20 ml por 1 m ³	- 0.2 pH
pH- (Reducer)	Pool	200 ml por 10 m ³	- 0.2 pH
pH+ (Increaser)	SPA	33 g (1 ladle) por 1 m ³	+ 0.15 pH
pH+ (Increaser)	Pool	200 g (6 ladles) por 10 m ³	+ 0.1 pH



Complementary products

Keep your pool in tip-top condition with our range of complementary products

Controlling the pH is essential for keeping your pool in top condition. What's more, flocculant is the perfect addition, as it ensures crystal-clear water by clumping particles together for a thorough clean.

With these products, you can:

- Agglutinate microscopic particles
- Optimise your filtration system
- Keep your pool water crystal clear

Flocculant for small swimming pools

Ideal for small, above-ground and inflatable pools, as well as hot tubs and whirlpools.

- 8 weeks – 240 g (concentrate)
- 14 weeks – 420 g (concentrate)
- 32 weeks – 450 g (super-concentrate)



Flocculant for large swimming pools

Designed for larger pools and frequent use.

- 12 weeks – 850 g (concentrate)
- 24 weeks – 1650 g (concentrate)
- 28 weeks – 900 g (super-concentrate)

