

CRYSTAL WATER

FLOCULANTE

The definitive guide to keeping your pool water crystal clear at all times



NATURAL
FORMULA



FAST
RESULTS



NO
ALUMINIUM



COMPATIBLE WITH
MORE TREATMENTS



Nortembio® POOL

Why does the water in the pool become cloudy?

Even if the water is disinfected, it is common for it to lose transparency over time. This occurs because microscopic particles accumulate in the water that the filtration system cannot retain.

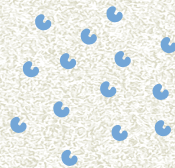


What is a flocculant and how does it help clarify water?

Flocculant is a product designed to aggregate microscopic particles present in water. Many of these particles are too small to be captured by the filtration system, so they remain in suspension and cause turbidity. Flocculant acts by binding these particles together, forming larger clusters that can be more easily removed.

How the flocculant works

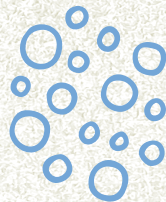
1 *Small particles in the water*



2 *The flocculant groups them together*



3 *The particles increase in size*



4 *Or they are deposited at the bottom to be vacuumed up*



FORMATS

Our flocculant is available in various concentrated formats to suit different pool sizes and maintenance needs. This allows you to choose the most suitable option based on the volume of water and frequency of use.

Small swimming pool & whirlpool

Ideal for small pools, removable pools, inflatable pools, jacuzzis & hydromassage pools.

8 weeks - 240 g (concentrate)

14 weeks - 420 g (concentrated)

32 weeks - 450 g (super concentrated)



Large swimming pool & spa

Designed for pools with greater capacity & frequent use

12 weeks - 850 g (concentrate)

24 weeks - 1650 g (concentrate)

28 weeks - 900 g (super concentrate)



1 Apply the correct dose

Add the recommended amount according to the size of your pool. Using the correct dose allows the flocculant to properly group the particles present in the water.

2 Apply the product

The water must be at least 30°C. Preferably early in the morning or at night. Pour the flocculant directly onto the water outlet jet, i.e. into the water circulation systems.

How to use flocculant correctly

To obtain good results and restore water clarity, it is important to apply the product correctly by following these simple steps.

3 Maintain circulation

Keep the water circulating for at least 1 hour. It is important that the filtration system is switched off during this process.

4 Let the water settle

After circulating for an hour, leave the water to settle for 3 to 4 hours. During this time, the flocculant will clump the particles together, which will then settle at the bottom of the pool.

5 Clean the bottom

Use a pool cleaner to remove dirt that has accumulated at the bottom of the pool. Once the particles have been removed, the water will look much clearer and cleaner.



Dosage of flocculant

*Practical advice

Preventative treatment is the best way to prevent pool water from losing its clarity.

Small, removable swimming pools and whirlpools:

Minimum recommended dose:
1 scoop (30 ml) per 10 m³ of water

10 m³
1 scoop

20 m³
2 scoops

30 m³
3 scoops

40 m³
4 scoops

Large swimming pools & SPA

Minimum recommended dose:
1 scoop (70 ml) per 22 m³ of water

50 m³
2.5-4 scoops

65 m³
3-5 scoops

90 m³
4-6 scoops

110 m³
5-7 scoops

Adjust the dose according to turbidity

The amount of product may vary depending on the condition of the water.

Slightly cloudy water - Use the minimum recommended dose.

Very cloudy water - It may be necessary to increase the dose within the indicated range.



Compatibility with flocculant

Compatible with all types of pools & treatments

Our flocculant has been designed to work effectively in most swimming pools, provided they have a water circulation system.

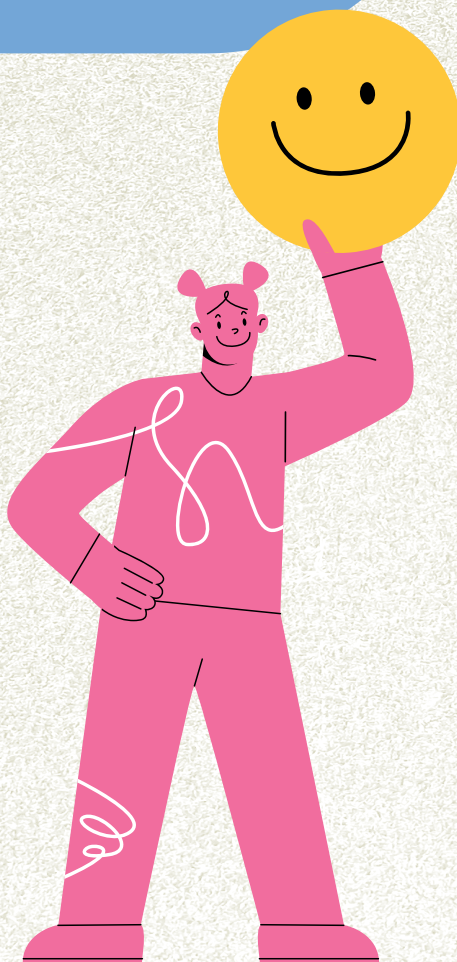
Swimming pools

Sources

In-ground swimming pools
Above-ground swimming pools
Jacuzzis or hot tubs

Treatment systems

With chlorine
With anti-algae products
With other treatments
Does not alter the pH of the water



★ Practical advice

Before applying the flocculant, ensure that the circulation system is functioning correctly. This guarantees even distribution and optimal results.



Exception

Not suitable for saltwater pools

Tips & common mistakes



Better results

Water temperature – Apply when the water is below 30°C.

Time of application – Preferably at night or early in the morning.

Clean the bottom – Use a pool cleaner after treatment.

Common mistakes to avoid

Applying in water that is too hot – The flocculant works best at temperatures below 30°C.

Not cleaning the bottom after treatment – Particles accumulate and turbidity returns.

Skipping regular maintenance – The water becomes cloudy more quickly and the flocculant takes longer to work.

Not adjusting the dose according to turbidity – Using an insufficient dose in very cloudy water delays results.

★ **Practical advice**

Combining the correct application of flocculant with constant maintenance is the key to keeping your pool crystal clear and ready to enjoy.

Complementary products

Keep your pool in perfect condition with complementary products

Flocculant is ideal for removing turbidity and grouping particles, but for crystal-clear, balanced water, it is also important to control the pH.

With these products, you can:

- Easily adjust the pH
- Maintain water quality all year round
- Optimise the effect of the flocculant

NortemBio Pool pH Minus

Liquid pH reducer, ideal for safely and quickly lowering the pH of your pool or spa.

Main benefits:

- Maintains balanced pH
- Improves water quality
- Compatible with standard treatments and flocculants



NortemBio Pool pH Plus Raiser

Natural pH regulator powder, ideal for raising the pH of swimming pools and spas. Safe and effective for all types of maintenance.

- Precise pH adjustment
- Safe and natural formula
- Complements flocculant treatment for crystal clear water

